



SHILMENT CONSTRUCTION LTD

Building Strength with Precision

ABOUT US

Shilment Construction Ltd is a dynamic construction company dedicated to delivering excellence in building and civil engineering projects. Founded in 2024, we bring together expertise, innovation, and commitment to create structures that stand the test of time.

We specialize in comprehensive construction solutions, from ground-breaking to final finishes, ensuring quality, safety, and client satisfaction at every stage of the project lifecycle.

Our Core Values



Quality

Uncompromising standards in every project we undertake, ensuring superior craftsmanship and durability.



Safety

Prioritizing the wellbeing of our team, clients, and communities through rigorous safety protocols.



Integrity

Building trust through transparency, honesty, and ethical business practices in all our dealings.



Innovation

Embracing modern construction techniques and technologies to deliver cutting-edge solutions.

OUR CORE SERVICES

01 Building Construction

Complete building construction services from foundation to roofing. We handle residential homes, commercial buildings, and industrial facilities with precision and expertise.

02 Civil & Structural Works

Comprehensive civil engineering solutions including earthworks, foundations, structural steel, concrete works, and infrastructure development for complex projects.

03 Renovations & Maintenance

Expert renovation and refurbishment services to breathe new life into existing structures. We provide ongoing maintenance programs to ensure longevity and performance.

04 Interior Fit-Outs

Professional interior finishing and fit-out services including partitioning, flooring, ceilings, painting, and complete space customization to client specifications.

COMPANY HIGHLIGHTS

At a glance: key milestones, achievements, and capabilities that define Shilment Construction Ltd.



CORE AREAS OF EXPERTISE

- ✔ Residential Construction
- ✔ Commercial Buildings
- ✔ Industrial Facilities
- ✔ Civil Engineering Works
- ✔ Structural Steel Works
- ✔ Concrete Construction
- ✔ Renovation Projects
- ✔ Interior Fit-Outs
- ✔ Project Management
- ✔ Quality Assurance

Why Choose Shilment Construction?

We combine technical expertise with a client-focused approach to deliver construction projects that exceed expectations. Our commitment to quality, safety, and innovation ensures that every project is completed to the highest standards.

APARTMENTS

Location: Ruiru, Kamakis | Year: 2025

This landmark project showcases our capability in delivering high-quality residential construction. The project involved comprehensive ground works, structural construction, finishing works, and landscaping. Completed on schedule and within budget, this project exemplifies our commitment to excellence and client satisfaction.



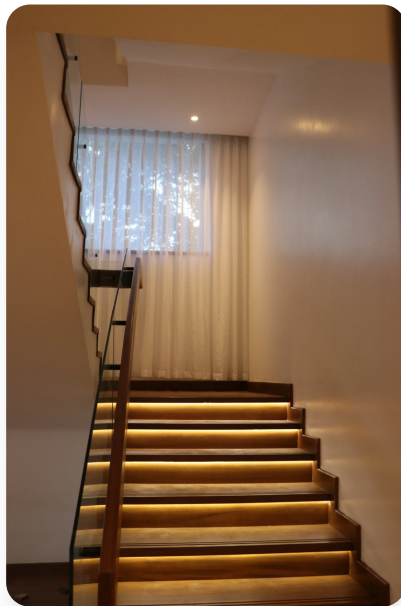
MODERN BUNGALOW

Location: Tigoni | Year: 2025



A stunning modern bungalow that combines contemporary design with functional living spaces.

The construction process involved meticulous planning, quality craftsmanship, and the use of premium materials to ensure durability and aesthetic appeal. The completed bungalow stands as a testament to our dedication to delivering exceptional living environments.



MODERN BUNGALOW

Location: Tigoni | Year: 2025

This modern bungalow project highlights our ability to create stylish and functional residential spaces. The construction process involved meticulous planning, quality craftsmanship, and the use of premium materials to ensure durability and aesthetic appeal. The completed bungalow stands as a testament to our dedication to delivering exceptional living environments.



BUNGALOW

Location: Runda | Year: 2025



Construction of a modern bungalow aimed at providing comfortable living spaces. The project required adherence to specialized building codes for residential facilities, including high-quality finishes, efficient plumbing and electrical systems, and accessibility features. Shilment delivered a facility that serves the community's housing needs.



OUR MISSION

To deliver construction excellence through innovative solutions and superior craftsmanship, building lasting relationships with clients based on trust and exceptional results, while upholding the highest standards of safety, quality, and environmental responsibility.

OUR VISION

To be the leading construction company recognized for innovation and quality, transforming the built environment through sustainable construction, setting industry benchmarks in project delivery and client satisfaction, and contributing positively to community and economic growth.

OUR COMMITMENT

We are committed to zero compromise on safety, timely project delivery without sacrificing quality, transparent communication with all stakeholders, and the continuous improvement of our construction practices.

OFFICIAL COMPANY DOCUMENTS

Certificate of Incorporation



KRA PIN Certificate

KRA PIN Certificate

For General Tax Obligations
General PIN Certificate
Form PIN/001/0000000000
Taxpayer Name: SHILMENT CONSTRUCTION LTD
Taxpayer ID: 153546

Certificate Date: 01/03/2024
Personal Identification Number: 0000000000000000

This is to certify that taxpayer shown herein has been registered with Kenya Revenue Authority.

Taxpayer Information

Taxpayer Name	SHILMENT CONSTRUCTION LTD
Email Address	INFO@SHILMENT.COM

Registered Address

L.R. Number	Building
Street/Block	City/Town
County	District
Tax Area	Station
P.O. Box	Postal Code

Tax Obligation(s) Registration Details

Sr. No.	Tax Obligation(s)	Effective Date
1	Income Tax - Resident Individual	21/09/2023

The above PIN must appear on all your tax invoices and correspondence with Kenya Revenue Authority. Your accounting and data as of 31st December to use the previous status in the Income Tax Act unless a change has been approved by the Commissioner-General's Tax Department. The status of Tax Obligation(s) with 'Current' status and administratively change to 'Active' on date mentioned in 'Effective Tax Code' or any transaction done during the period. This certificate shall remain in force till further updated.

*This system is subject to change based on the certificate data to Commissioner
Disclaimer: This is a system generated certificate and does not require signature.

REGISTRATION DETAILS

COMPANY NAME

**Shilment
Construction Ltd**

FOUNDED

2024

REGISTRATION STATUS

**Fully Registered
and Compliant**

BUSINESS TYPE

**Construction and
Civil Engineering**

CONTACT US



SPEAK TO OUR TEAM
0722236223



GENERAL ENQUIRIES
shilmentconstruction@gmail.com



MAILING ADDRESS
P.O. Box 15977 - 00509

**YOUR
FOUNDATION
FOR
FUTURE
SUCCESS**

Shilment Construction Ltd. is
ready to build with you.

Partner with Precision.

We look forward to working with you on your next construction project. Contact us today to discuss how we can bring your vision to life, delivered with the strength and precision you expect.